



CIP Enhancement Plus a Whole Lot More

62-174/326 Air Blow Check Valve

Concept

Alfa Laval®'s Tri-Clover® brand Air Blow Check Valve is designed to (1) evacuate lines of product or CIP solution and (2) for air agitation of product in tanks and other vessels.

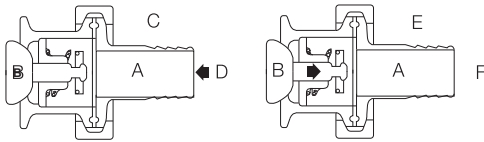
It also helps to protect pipelines against corrosion

- air drying of lines permits formation of protective oxide film
 - the key to placing a system in its most corrosion resistant condition.
- Improves product uniformity and quality

- product air agitation thoroughly mixes and blends product.

Working Principle

Filtered air enters adapter (A) and exerts pressure on the valve plug assembly (B) causing it to move forward and unseat. The filtered air passes through the valve and around the valve plug assembly (B) entering the pipeline or tank. When the air pressure entering the adapter (A) is shut-off the valve plug assembly is returned to its normally closed position by return spring, preventing any product or CIP solution backflow. The Air Blow Check Valve can be used in any position, horizontal or vertical.



The Air Blow Check Valve is easily installed on tanks or other vessels, for product agitation, by using a Tri-Clamp, a gasket, and a mounting ferrule. No other fittings are required. To use the Air Blow Check valve to evacuate lines of product or CIP solution it is recommended that it be clamped on the end of the "Y" branch of a Ball Check Valve then installed in the line. See page 3 for illustrations of typical installations.

Standard Design

- Fail Safe Operation – backflow of product or CIP solution prevented by simple air to open, spring to close operation.
- Easy Assembly/Disassembly – Tri-Clamp® connections permit quick disassembly and assembly for replacing Filter Media, cleaning or inspection.
- Remotely Controlled – can be remotely controlled by controlling the supply of air to the valve.
- Rugged Construction – type 316 stainless steel is standard. Spherical plug assembly is bonded EPDM rubber.
- Conforms to 3A Accepted Practices – for applications requiring a final filtering of air prior to entering tank or pipelines.

TECHNICAL DATA

Temperature range	20°F to 284°F
Pressure range	Varies based on style of clamp used. Contact Alfa Laval.
Air pressure	810 PSI minimum

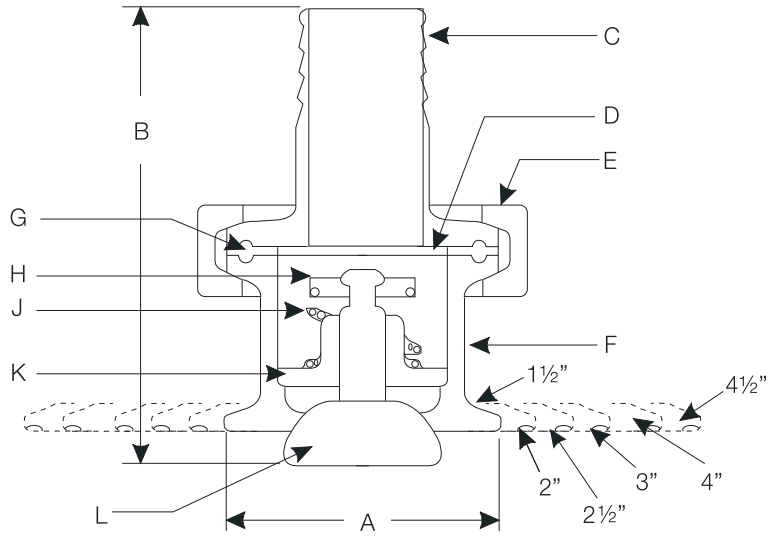


PHYSICAL DATA

Materials

Product wetted steel parts	AISI 316 stainless steel
Other steel parts	AISI 304 stainless steel
Product wetted parts	EPDM
Other seals	Buna

Dimensions (inches)

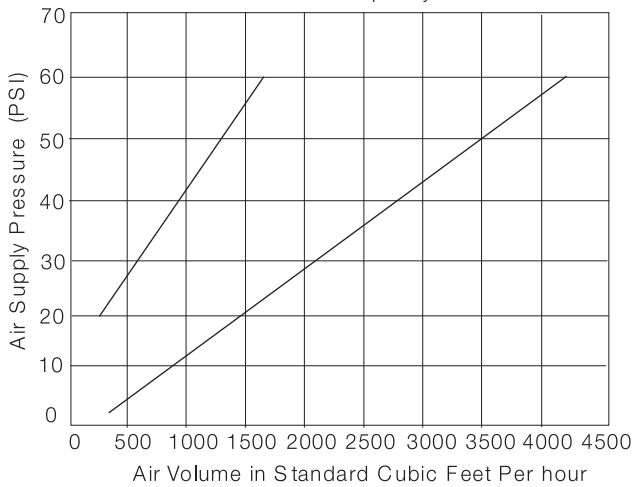


- C = Adapter
- D = Filter disc
- E = Clamp
- F = Valve body
- G = Stainless steel perforated disc and buna gasket
- H = Washer
- J = Spring
- K = Stem guide
- L = Plug assembly

Connection Size	A-OD (inches)	B-Overall Length					
		Model 62-174R			Model 62-326-Adapter-Size		
		"A" Adapter	"B" Adapter	"C" or "C1" Adapter	"A" Adapter	"B" Adapter	"C" Adapter
1 1/2	1 15/16	2 1/2	3	2	n/a	n/a	n/a
2	2 1/2	2 1/2	3	2	3 11/16	3 9/16	2 11/16
2 1/2	2 1/16	2 1/2	3	2	3 11/16	3 9/16	2 11/16
3	3 9/16	2 1/2	3	2	3 11/16	3 9/16	2 11/16
4	4 1 1/16	2 1/2	3	2	3 11/16	3 9/16	2 11/16
4 1/2	5 1/8	2 1/2	3	2	3 11/16	3 9/16	2 11/16

n/a = not available

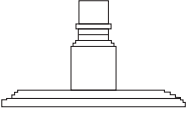
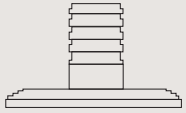
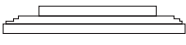
Air Blow Filter Capacity Test





**Options
Equipment**

- SFY molded elastomers
- Air fittings - Air quick coupler
- Hose barb
- NPT tapped hole

Variety of Adapters Available

Adapter Type	For Model 62-174R	For Model 62-326
 <p>"A" Adapter - For Air Line Quick Coupler</p>	<p>(A) #37-80</p>	<p>(A) #37-161</p>
 <p>"B" Adapter - For 1" ID Rubber Hose</p>	<p>(B) #14MPHR-1-S</p>	<p>(B) #14MPHR-2 x 1-S</p>
 <p>"C" Adapter - For NPT Female Connector "C1" Adapter</p>	<p>(C) #23BMP-1½ x 3/8-S 3/8 NPT Female Connection (C1) #23BMP-1½ x ½-S ½ NPT Female Connection</p>	<p>(C) #23BMP-2 x ¾-S ¾ NPT Female Connection</p>

Replacement Media Ordering Information

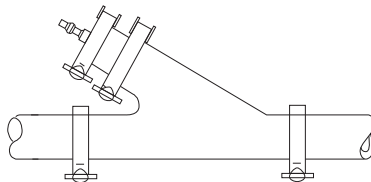
Item	For Model 62-174R	For Model 62-326
 <p>Filter Disc (fits all sizes)</p>	<p>Order #FA-1½-30C Sold 50/pkg. .3 MICRON</p>	<p>Order #FA-2-30C Sold 50/pkg. .3 MICRON</p>
 <p>SS Perforated Disc and Buna Gasket</p>	<p>Order #FAD-1½01 Sold in Single Units</p>	<p>Order #FAD-201 Sold in Single Units</p>

Note!

The Air Blow Check Valve must be used with a Filter Disc (Not furnished with unit). These filter discs are available in packages of 50.

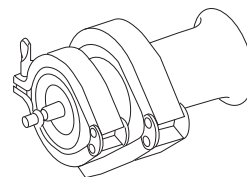
Typical Installations of Air Blow Check Valve and Disposable Air Filter Media

(62-156A-SIZE) includes 45BY and air blow assembly



For Product Agitation in Tank or Vessels

For Air Blowing Pipelines - Used with Tri-Clover's ball check valve #(45BY-Type Connection-Size) for pipeline evacuations of product or C.I.P. solution.



Alfa Laval reserves the right to change specifications without prior notification. ALFA LAVAL is a trademark registered and owned by Alfa Laval Corporate AB.

ESE00519ENUS 1505

© Alfa Laval

How to contact Alfa Laval

Contact details for all countries are continually updated on our website. Please visit www.alfalaval.us to access the information direct.