



**Options**

- A. Weld ends or connection types other than Tri-Clamp.
- B. Control and Indication (IndiTop, ThinkTop or ThinkTop Basic).
- C. Product wetted seals of NBR or FPM.
- D. Product wetted seals in EPDM, Buna or SFY.
- E. Low profile plug.

**Dimensions**

Nominal size	Inch
A <sub>1</sub>	40.30
A <sub>2</sub>	45.20
OD	6
ID	5.78
t	0.11
E with welding ends	6.50
E with Tri-clamps	6.25
F <sub>1</sub>	4.84
H	1.04
N (tangential valve body)	1.04
Weight (lb)	164.60

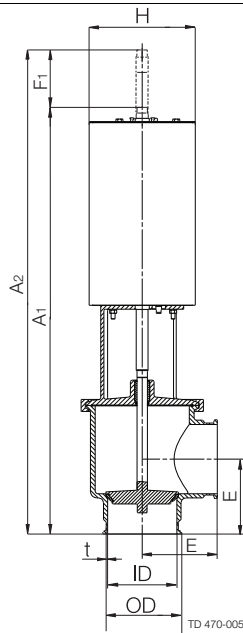
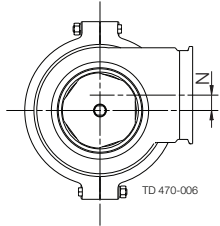
**Please note!**

Opening/closing time will be effected by the following:

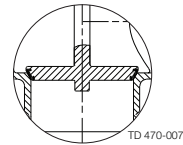
- The air supply (air pressure).
- The length and dimensions of the air hoses.
- Number of valves connected to the same air hose.
- Use of single solenoid valve for serial connected air actuator functions.
- Product pressure.

**Air Connections Compressed air:**

R 1/8" (BSP), internal thread.



Shut-off valve



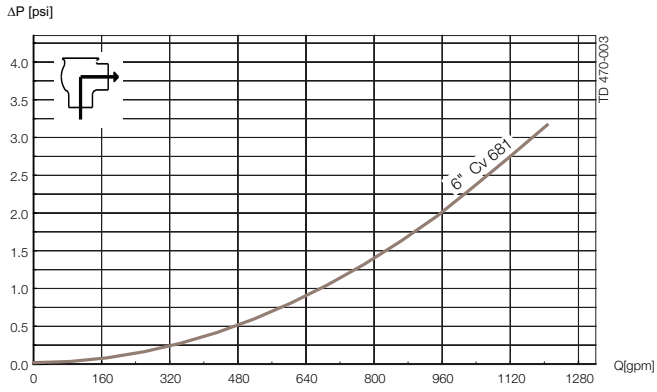
Low profile plug

**Actuator function**

**Air Consumption (In3 free air) for one stroke**

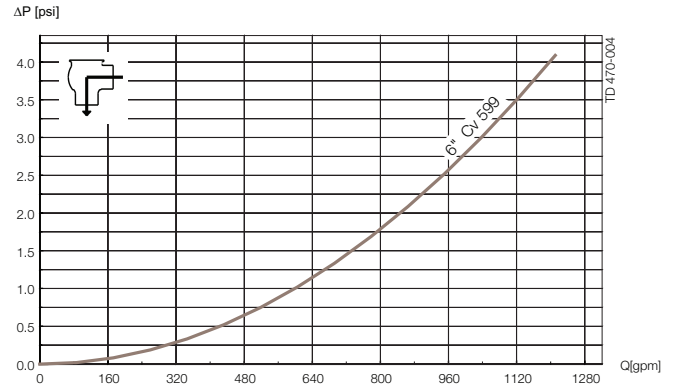
Size	6"
NO and NC	19.5 x air pressure [psi]

## Pressure drop/capacity diagrams



### Note!

For the diagrams the following applies:



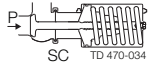
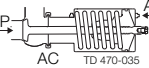
Medium: Water (68° F/20° C)

Measurement: In accordance with VDI2173

Pressure data for Unique 7000 Series valves 6-inch

Table 1

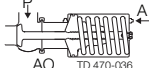
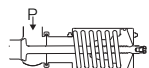
Max. pressure in psi without leakage at the valve seat

Actuator / Valve body combination and direction of pressure	Air pressure [psi]	Plug position	Max Pressure (psi)
 SC TD 470-034		NC	145.0
 AC TD 470-035	87.6	NO	145.0

- A = Air
- P = Product pressure
- AC = Air closes
- SC = Spring closes

Table 2

Max. pressure in psi against which the valve can open.

Actuator / Valve body combination and direction of pressure	Air pressure [psi]	Plug position	Max Pressure (psi)
 AO TD 470-036	87.6	NC	145.0
 SO TD 470-037		NO	145.0

- A = Air
- P = Product pressure
- AO = Air opens
- SO = Spring opens

Alfa Laval reserves the right to change specifications without prior notification. ALFA LAVAL is a trademark registered and owned by Alfa Laval Corporate AB.

ESE00250ENUS 1505

© Alfa Laval

**How to contact Alfa Laval**

Contact details for all countries are continually updated on our website. Please visit [www.alfalaval.us](http://www.alfalaval.us) to access the information direct.